

Products > Ball Valve & Seat > SP-140

# Ball Valve & Seat - SP-140

## Specifications

<b>Model</b>	SP-140
<b>Inside Diameter</b>	.083/.087"
<b>Outside Diameter</b>	.1775/.1805"
<b>Thickness</b>	.058/.062"
<b>Ball Diameter</b>	.1250"

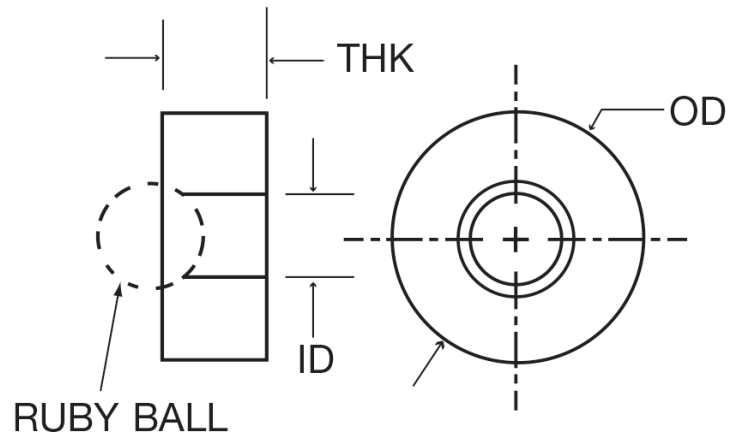


### Description

Sapphire Ball Seats are used as check valves in pumps. Using a Grade 5 sapphire or ruby ball in conjunction with the seat will provide a seal due to matching points of contact. Our stock sapphire seat matches with a 1/8" diameter ball (Model No. B3.18). Custom design is welcome.

### Typical Applications

- Liquid Chromatography
- Flow Control



### NOT SEEING EXACTLY WHAT YOU NEED?

We specialize in creating a wide range of custom optical components and custom mechanical components including a variety of shapes - from internal holes and tapers to outer flanges, angles and surface finishes. Contact us and we will consult with you to create a custom component that meets all of your specifications.